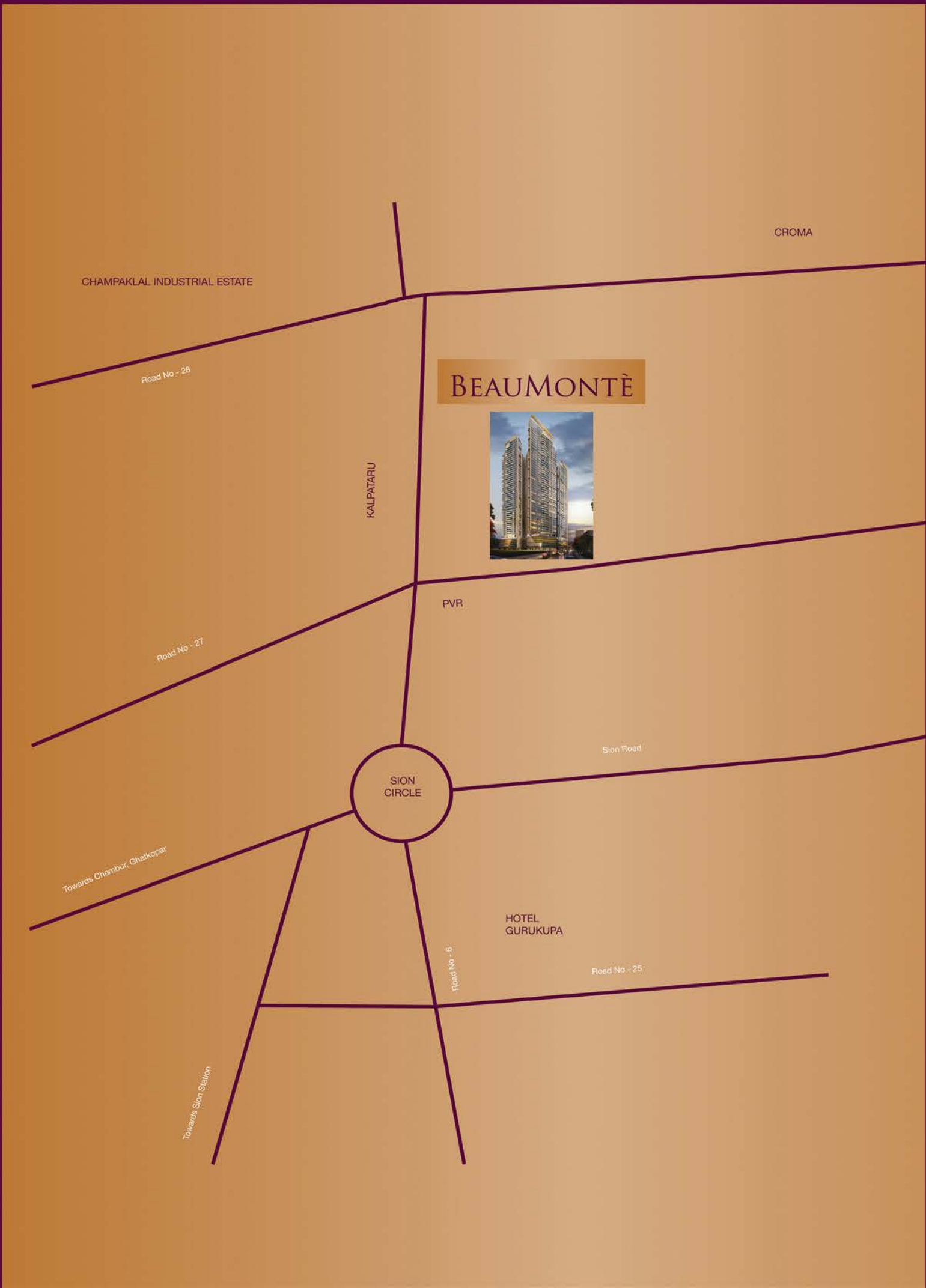


BEAUMONTÈ



LOCATION MAP





BEAUMONTÈ



E - DECK LEVEL

INTERNAL AMENITIES

Well-designed layouts with optimal space usage and cross ventilation for each apartment

Marble flooring in the living and dining rooms

2 split ACs in the living room and 1 split AC in each bedroom

Laminated wooden flooring that emanates warmth in the master bedroom

Marble flooring in other bedrooms

International standard well-designed tiled bathrooms with Marble counters

International standard well-designed tiled bathrooms with Marble counters

Glass shower cubicles

High-end sanitary ware fittings

Provision for telephone, lights, fans & TV points with adequate extra points, D2H, internet(Wi-Fi)

DG power back up for designated areas of apartments / elevators and common areas

Video door phone with intercom facility

Panic button in the living room and master bedroom

Gas leak detector in the kitchen

CCTV in the common area

COMMON FEATURES

High speed passenger elevators

Grand air-conditioned lobbies

Separate service & servant's elevators

Garbage chute (wet / dry) for easy disposal of waste

Concierge service maintained by professional agencies

Drop-off point

Provision of piped gas connection



LIVING ROOM

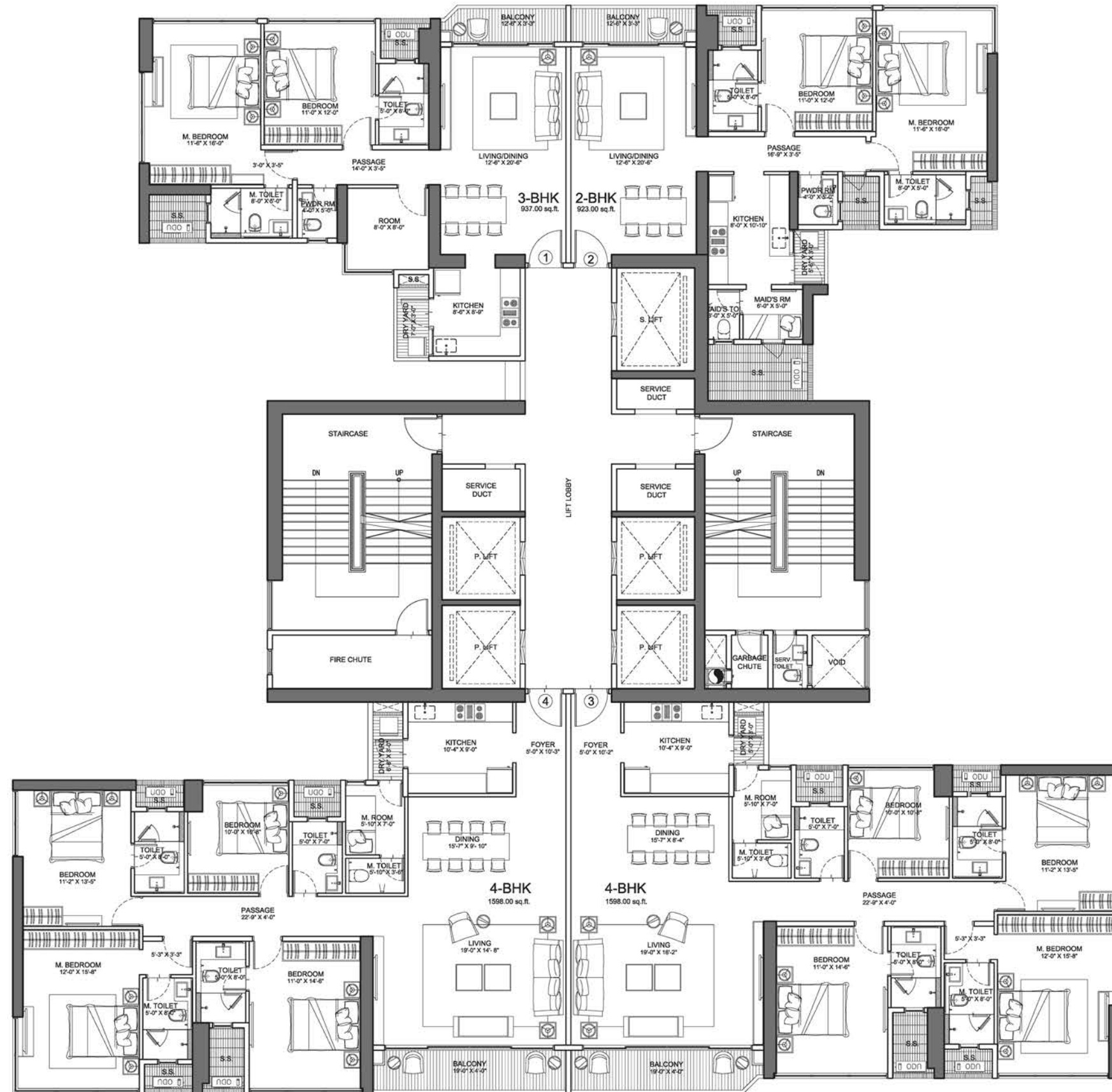


DINING



KITCHEN

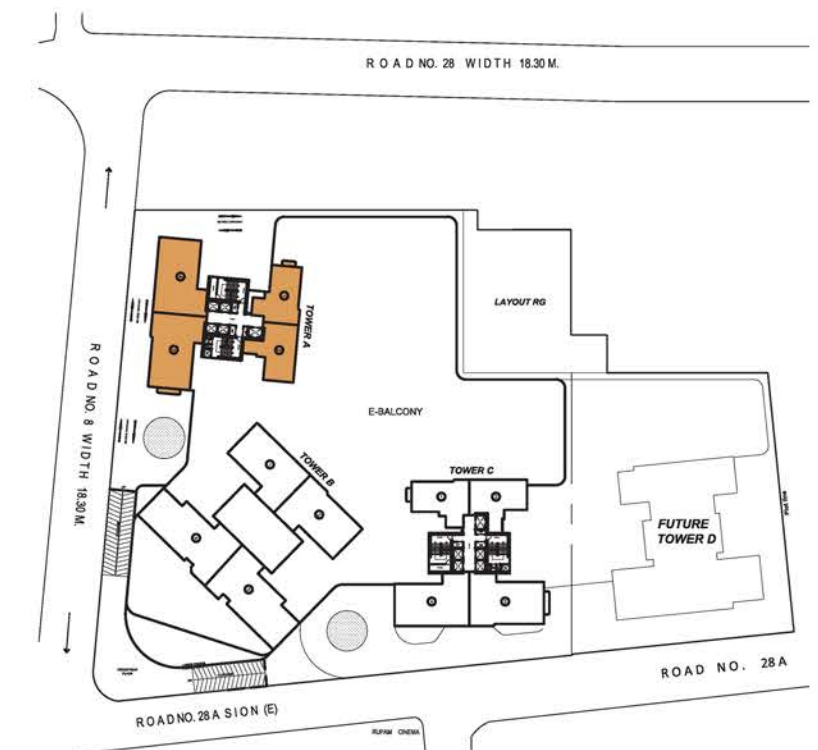
BEAUMONTÈ



TYPICAL FLOOR PLAN

(2ND, 4TH, 5TH, 6TH, 9TH, 10TH, 12TH, 13TH, 14TH, 16TH, 17TH, 18TH, 20TH, 21ST, 24TH, 25TH, 26TH, 28TH, 30TH, 32ND, 33RD, 34TH, 37TH, 38TH, 40TH, 41ST, 42ND, 44TH & 45TH)

TYPICAL FLOOR PLAN		
FLAT NO.S	TYPE	CARPET AREA
FLAT 1	3BHK	937
FLAT 2	2BHK	923
FLAT 3	4BHK	1598
FLAT 4	4BHK	1598



LOCATION PLAN



BEAUMONTÈ



TYPICAL FLOOR WITH EXTRA BALCONY		
FLAT NO.S	TYPE	CARPET AREA
FLAT 1	3BHK	970
FLAT 2	2BHK	923
FLAT 3	4BHK	1659
FLAT 4	4BHK	1598



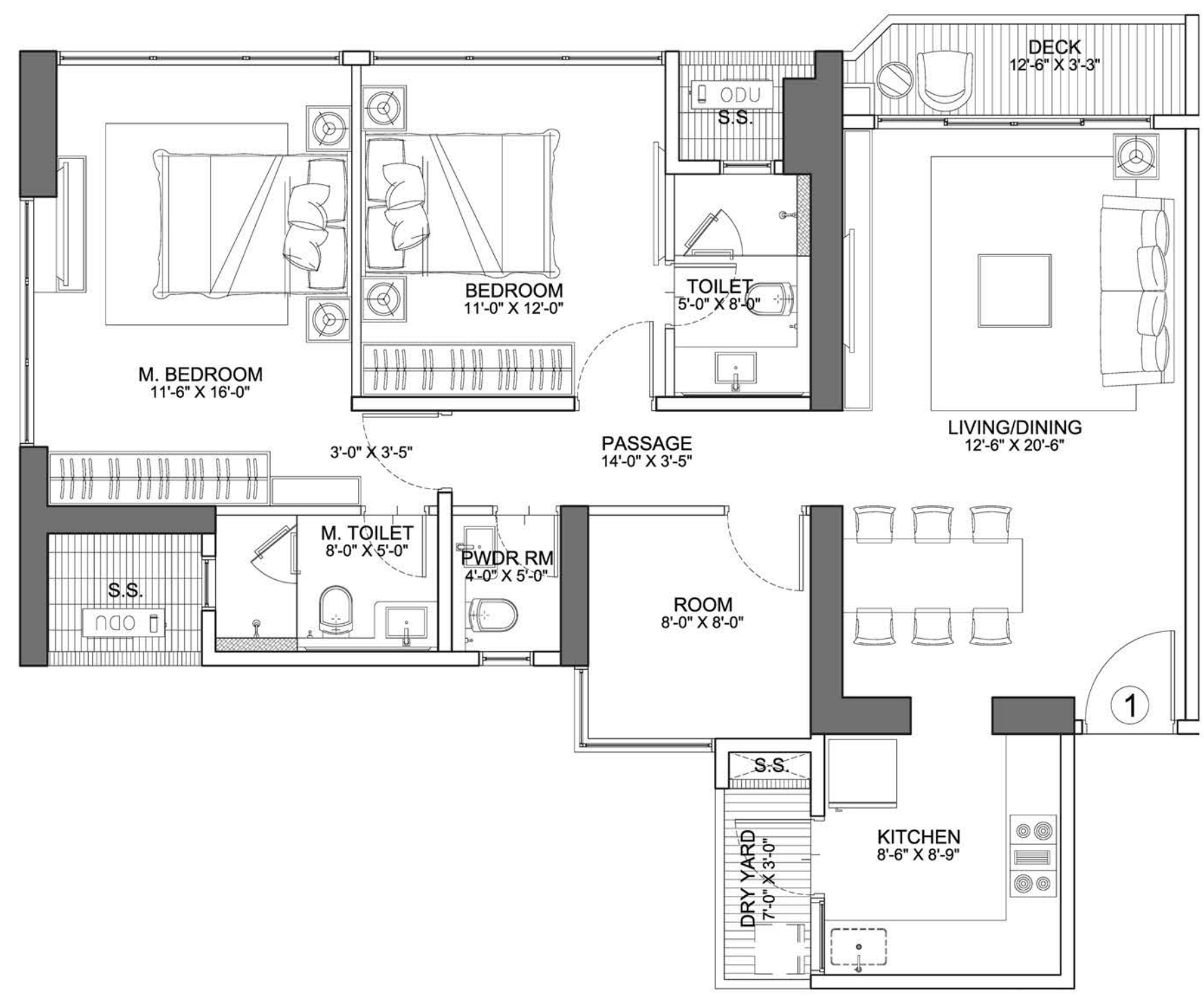
LOCATION PLAN



TYPICAL FLOOR PLAN WITH EXTRA BALCONY
 (3RD, 7TH, 11TH, 19TH, 23RD, 27TH, 31ST, 35TH, 39TH, 43RD)

BEAUMONTÈ

3-BHK FLAT NO.1
CARPET AREA -937.00 SQ.FT.



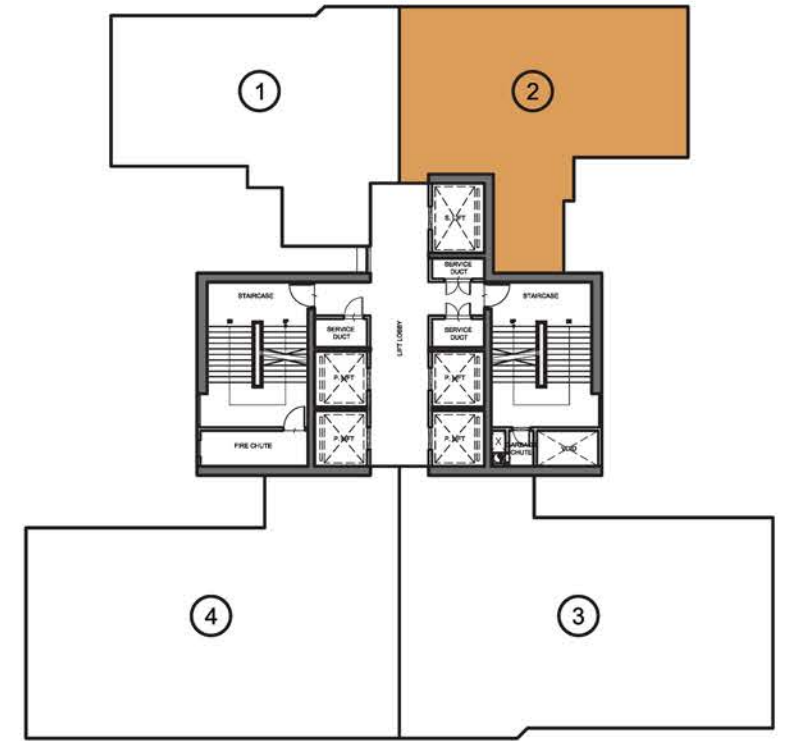
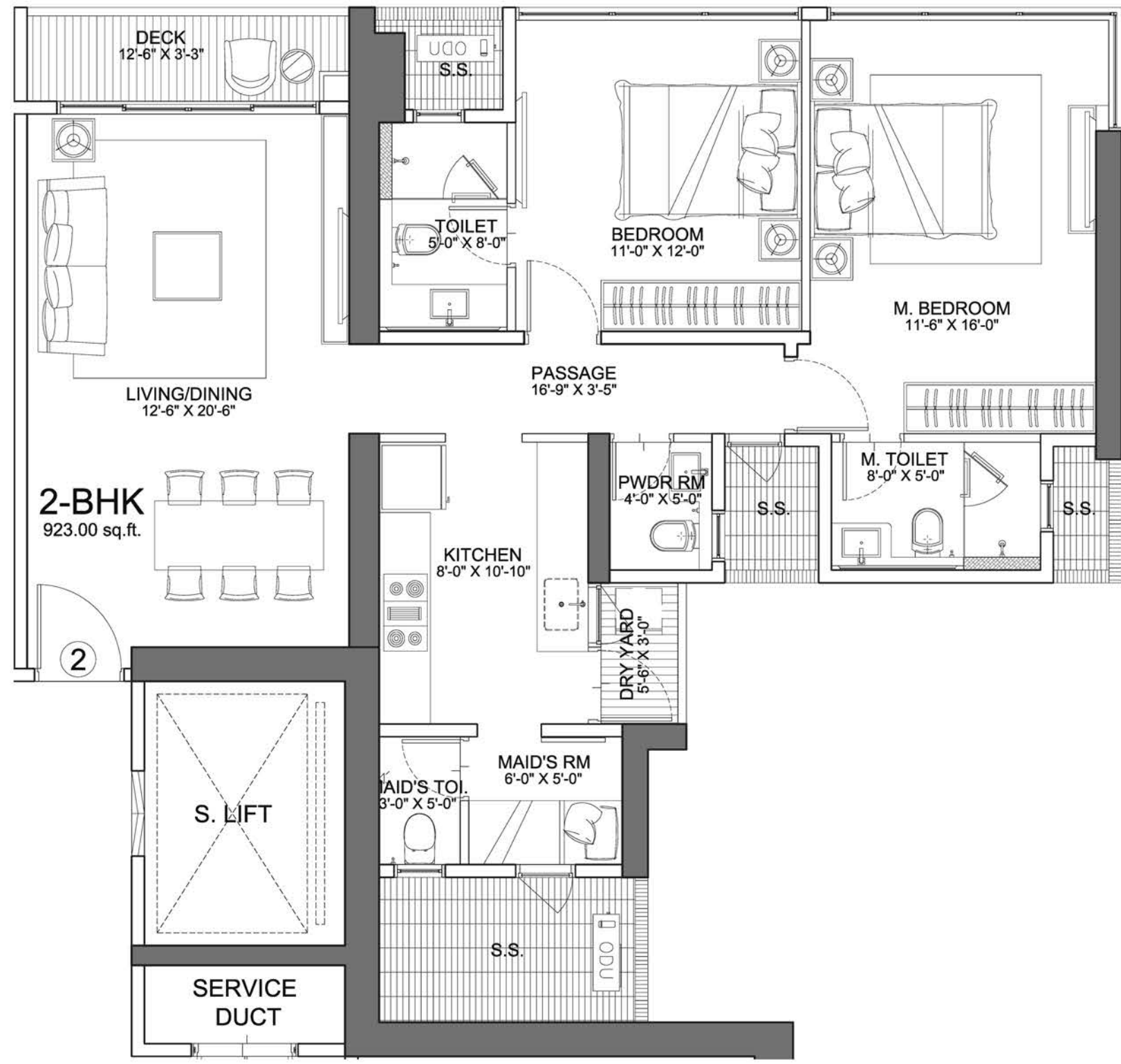
KEY PLAN

UNIT PLAN FLAT NO.1



BEAUMONTÈ

2-BHK FLAT NO.2
CARPET AREA - 923.00 SQ.FT.



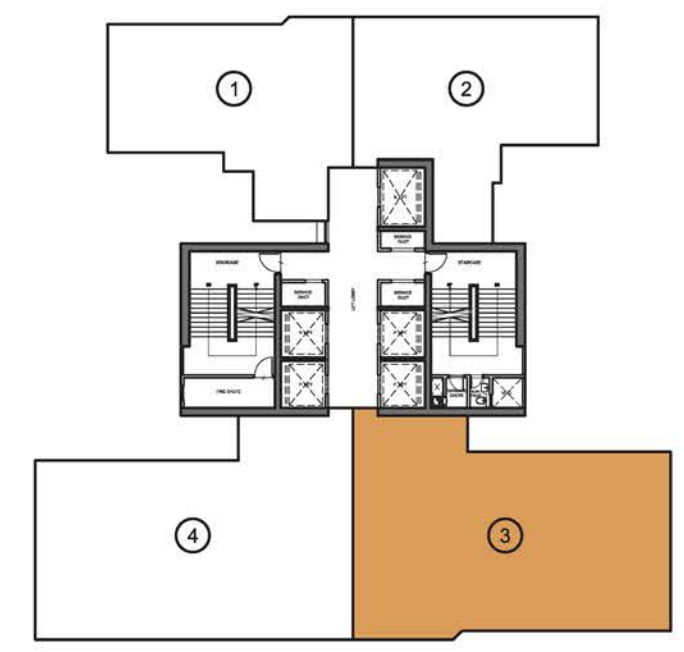
KEY PLAN



UNIT PLAN FLAT NO.2

BEAUMONTÈ

4-BHK FLAT NO.3
CARPET AREA -1598.00 SQ.FT.



UNIT PLAN: 4BHK FLAT NO: 3

BEAUMONTÈ

4-BHK FLAT NO.4
CARPET AREA -1598.00 SQ.FT.



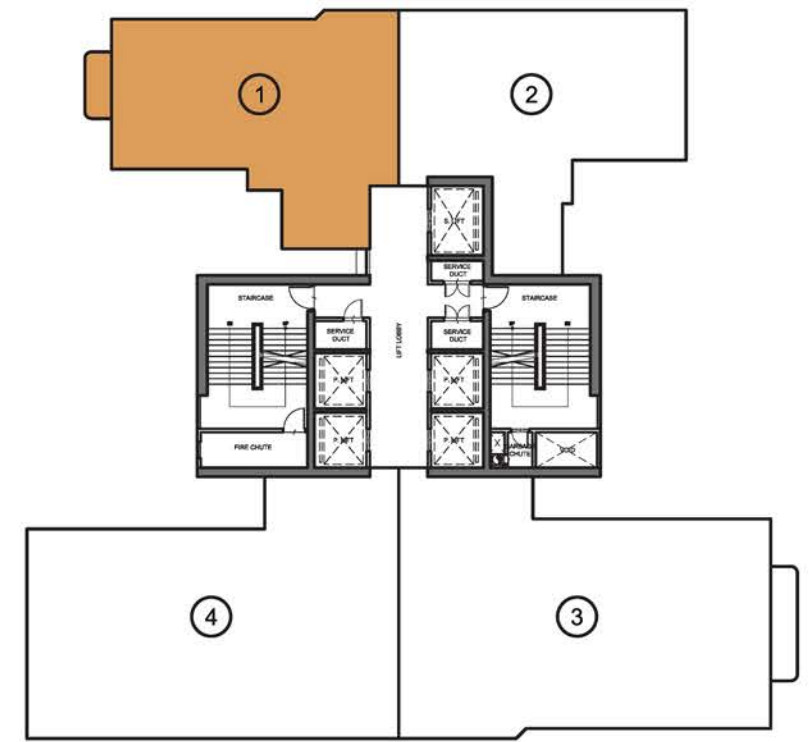
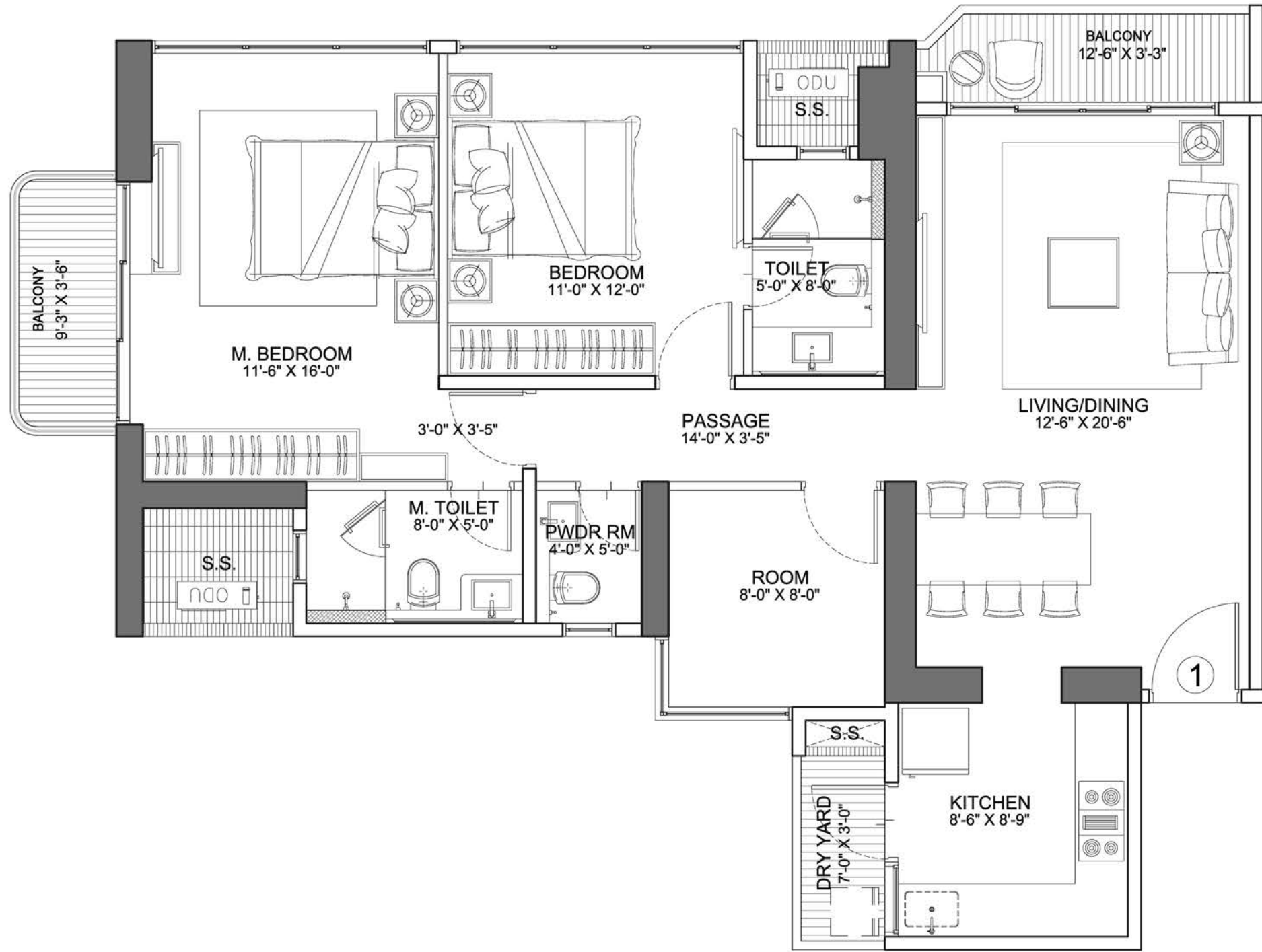
KEY PLAN



UNIT PLAN: 4BHK FLAT NO: 4

BEAUMONTÈ

3-BHK FLAT NO.1
CARPET AREA -970.00 SQ.FT.



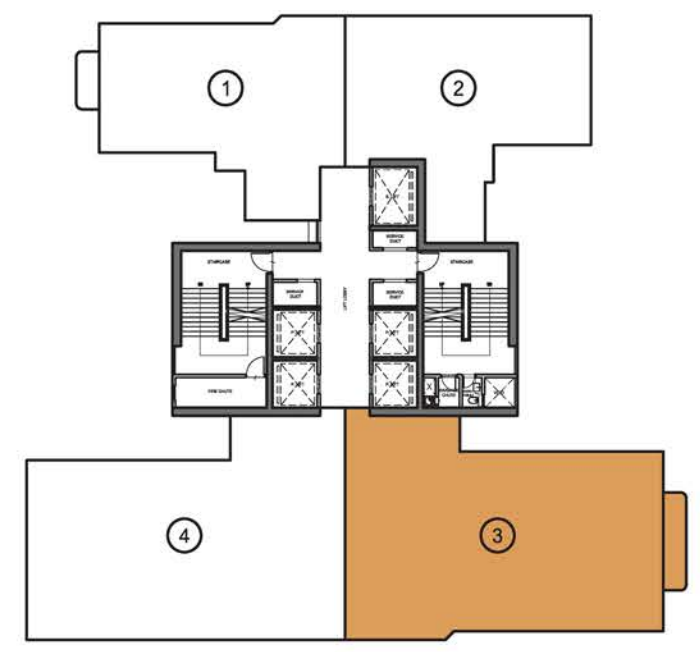
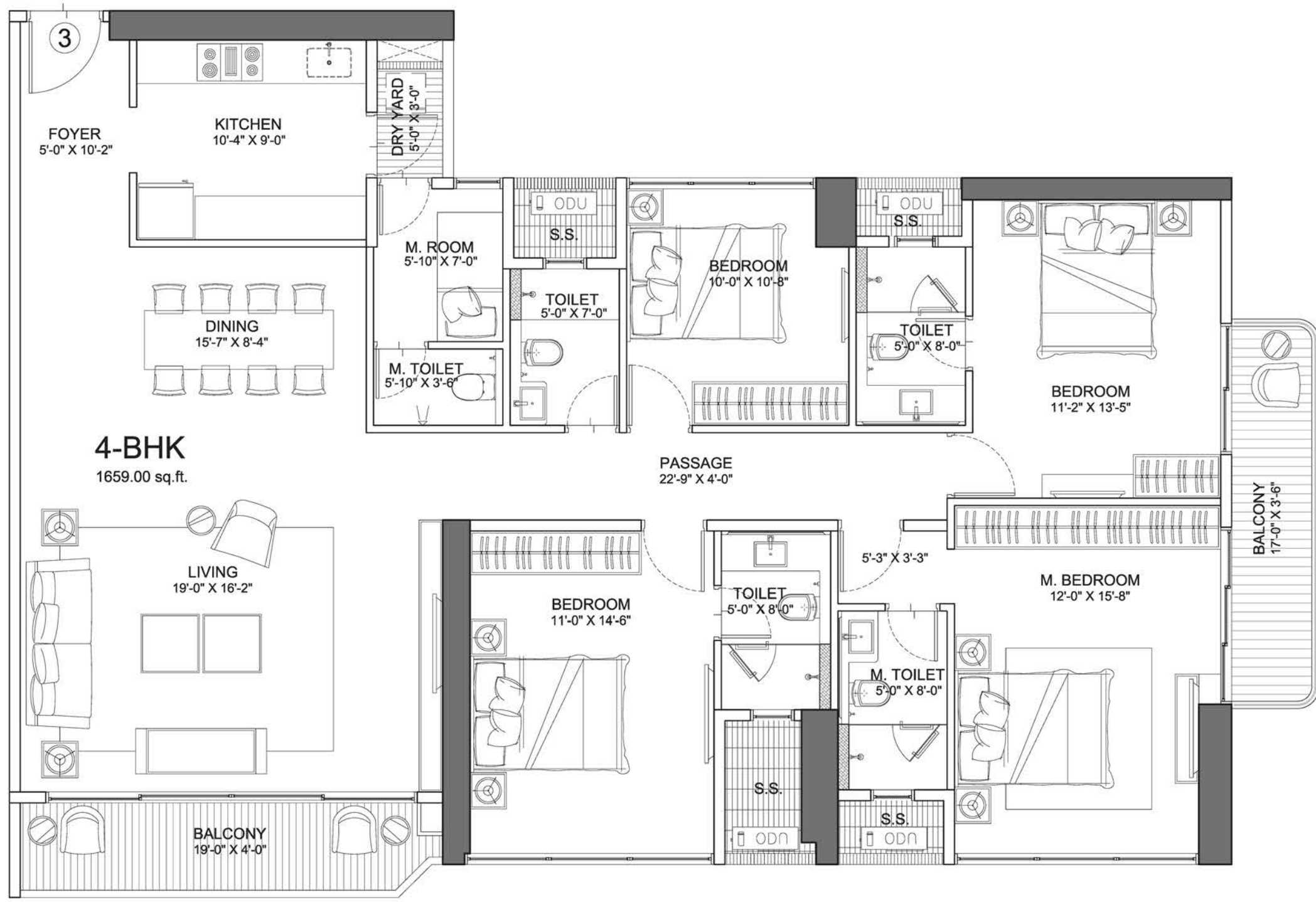
KEY PLAN



UNIT PLAN FLAT NO.1 WITH DECK EXTRA BALCONY

BEAUMONTÈ

4-BHK FLAT NO.3
CARPET AREA -1659.00 SQ.FT.



KEY PLAN



UNIT PLAN: 4BHK WITH EXTRA BALCONY: FLAT NO: 3

PROJECT FUNDED BY



For Sales Enquiry :1800 212 0000

SHETH CREATORS PRIVATE LIMITED

Site Address: Beaumonte, Near Pvr Cinema, Opp Croma Showroom, Sion (E), Mumbai.

Corporate Office: Hallmark Business Plaza, 1201,1203, & 1204, 12th Floor, Sant Dnyaneshwar Marg,
Near Guru Nanak Hospital, Kalanagar, Bandra (E),400051 (India)



SHETHCREATORS
Envisioning Landmarks

T +91 22 4200 5300/ 73 F +91 22 4200 5301 W www.shethcreators.com